



POLOSHIRTS
HARVARD
MEN / WOMEN



CLASSIC

V-NECK

MEN

CLASSIC
Black / Navy / White / Indigo / Sky Blue /
Charcoal / Dark Navy / Olive / Grey Melange

V-NECK
Black / White / Dark Navy



CLASSIC

V-NECK

WOMEN

CLASSIC
Black / Dark Navy / White

V-NECK
Black / Navy / White / Indigo / Sky Blue /
Charcoal / Dark Navy / Olive / Grey Melange

MORE INFO



HARVARD CLASSIC

STRETCH DELUXE POLO

The unique Harvard polo shirt is one of the most luxurious and detailed polo shirts on the market. It is unlike any other and yet it follows the classic codes. Made in a comfortable material blend, the stretchy fitting shapes stylishly at any time. Available in a classic version with buttoned placket or in version with an elegant v-neck. Men's Harvard features a stylish shirt collar stand for enhanced elegance. Women's Harvard features a well-designed open sleeve for a more feminine look.

FABRIC 95% combed organic cotton / 5% elastane - All colors (except Gray Melange)

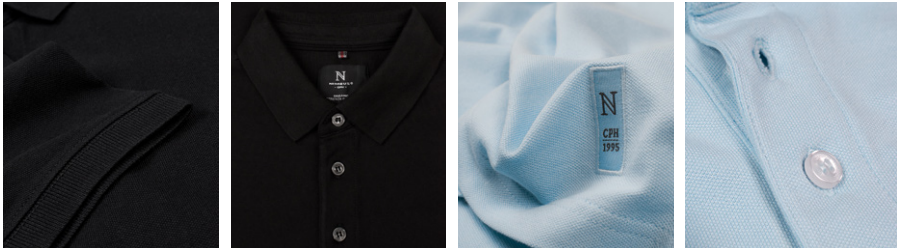
85% combed organic cotton / 10% viscose / 5% elastane - Grey Melange.

COLOUR Men: Black, Navy, White, Indigo, Sky Blue, Charcoal, Dark Navy, Olive, Grey Melange.

Women: Black, Dark Navy, White

WEIGHT 230 g/m²

SIZE Men: S - 4XL | Women: XS - 3XL



EXCLUSIVE DETAILS

- Stretch deluxe fitting
- Tone in tone buttons
- 3 button placket (Men)
- Shirt collar stand (Men)
- 4 button placket (Women)
- Open sleeve design (Women)

WASHING INSTRUCTIONS



CSR & SUSTAINABILITY



Men: Grey Melange

Men: Other Colours



Women: All colours

MEN



WOMEN



SUPPLIED BY

YOUR PRICE

HARVARD V-NECK

STRETCH DELUXE POLO

The unique Harvard polo shirt is one of the most luxurious and detailed polo shirts on the market. It is unlike any other and yet it follows the classic codes. Made in a comfortable material blend, the stretchy fitting shapes stylishly at any time. Available in a classic version with buttoned placket or in version with an elegant v-neck. Men's Harvard features a stylish shirt collar stand for enhanced elegance. Women's Harvard features a well-designed open sleeve for a more feminine look.

FABRIC 95% combed organic cotton / 5% elastane - All colors (except Gray Melange)

85% combed organic cotton / 10% viscose / 5% elastane - Grey Melange.

COLOUR Men: Black, Dark Navy, White.

Women: Black, Navy, White, Indigo, Sky Blue, Charcoal, Dark Navy, Olive, Grey Melange

WEIGHT 230 g/m²

SIZE Men: S - 4XL | Women: XS - 3XL



EXCLUSIVE DETAILS

- Stretch deluxe fitting
- Shirt collar stand (Men)
- Open sleeve design (Women)

WASHING INSTRUCTIONS



CSR & SUSTAINABILITY



Men: Grey Melange



Women: Grey Melange



Women: Other Colours

MEN



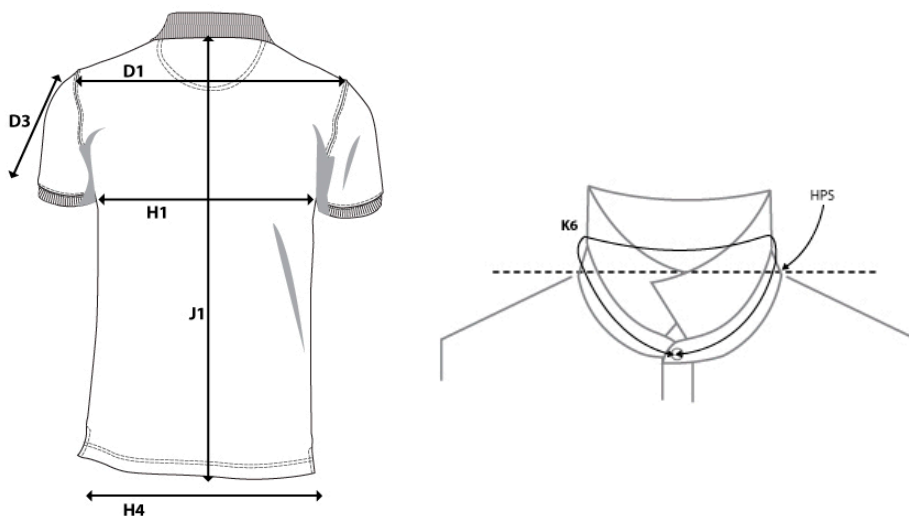
WOMEN



SUPPLIED BY

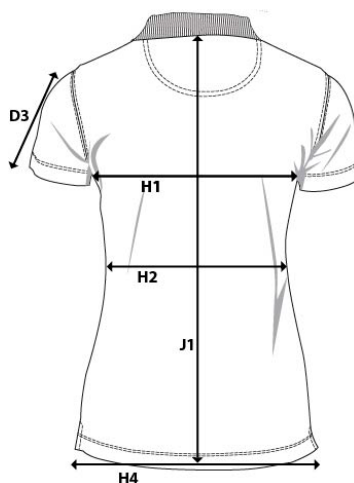
YOUR PRICE

SIZE AND FIT: HARVARD CLASSIC + V-NECK



HARVARD CLASSIC + V-NECK Mens

Base size: M / Measurement (in cm)	Diagram	S	M	L	XL	XXL	3XL	4XL
SLEEVE LENGTH - from shoulder seam	D3	19,5	20,5	21,5	22,5	23,5	24,5	24,5
SHOULDER TO SHOULDER	D1	42	43,5	45	46,5	48	49,5	51
CHEST WIDTH at armhole	H1	47	50	53	56	59	62	65
WAIST	H2	46	49	52	55	58	61	64
BOTTOM WIDTH	H4	46	49	52	55	58	61	64
FULL LENGTH at centre back	J1	69	71	73	75	77	79	79
NECKLINE CF to CF	K6	42	43,5	45	46,5	48	49,5	51



HARVARD CLASSIC + V-NECK Ladies

Base size: M / Measurement (in cm)	Diagram	XS	S	M	L	XL	XXL	3XL
SLEEVE LENGTH - from shoulder seam	D3	15	15,5	16	16,5	17	17,5	18
CHEST WIDTH at armhole	H1	39	42	45	48	51	54	58
WAIST	H2	35	38	41	44	47	50	55
BOTTOM WIDTH	H4	39	42	45	48	51	54	58
FULL LENGTH at centre back	J1	59	61	63	65	67	69	71



SIZE GUIDE

LADIES

CM

	EN / UK / US XS / 8 / 4	EN / UK / US S / 10 / 6	EN / UK / US M / 12 / 8	EN / UK / US L / 14 / 10	EN / UK / US XL / 16 / 12	EN / UK / US 2XL / 18 / 14	EN / UK / US 3XL / 20 / 16
CHEST	75-80	81-86	87-92	93-98	99-104	105-111	112-118
WAIST	59-64	65-70	71-76	77-82	83-88	89-95	96-103
HIP	83-88	89-94	96-101	102-107	108-113	114-120	121-127

MENS

CM

	EN / UK + US S	EN / UK + US M	EN / UK + US L	EN / UK + US XL	EN / UK + US 2XL	EN / UK + US 3XL	EN / UK + US 4XL
NECK	37/38	39/40	41/42	43/44	45/46	47/48	49/50
CHEST	90-95	96-101	102-107	108-113	114-119	120-125	126-131
WAIST	76-81	82-87	88-93	94-99	100-105	106-111	112-117
HIP	92-97	98-103	104-109	110-115	116-121	122-127	128-133

HOW TO MEASURE

